

MOUNTING INSTRUCTIONS

TOP

VER.03-2018EN

In this guide, we are limited to instructions for installing parts of our fitting assembly correctly. This manual is intended for use by experienced and qualified technicians (mechanics) and as such is not suitable for do-it-yourself purposes or for use by inexperienced persons.

The standard fitting consists of these parts:

- * frame group (vertical and horizontal)
- * necessary standard parts / basic material for the mounting
- * fittings (hinges, rollers etc.)
- * guiding rails group and frame brackets

Note: Parts (screws, etc.) needed to mount the wall bracket or hang it on the side walls are not included in the delivery.

We are sure that you will succeed in installing this product. However, if you have a problem or have questions, do not hesitate to contact Kružík s.r.o.

ATTENTION!

When installing this hardware assembly, a number of safety measures must be taken. To ensure the safety of all persons involved in the installation, observe the warnings and instructions listed below! If in doubt, contact your supplier.

- ! This manual has been written for the use of experienced technicians and is therefore not suitable for DIY or for the use of unexperienced person.**
- ! This manual only describes the installation of parts of the fitting and must therefore be supplemented by instructions for additional parts.**
- ! Read this manual carefully before proceeding with the installation.**
- ! Certain parts may be sharp or have rough edges. Therefore, we recommend the use of protective gloves.**
- ! All delivered parts are designed for use with sliding doors.**
- ! Make sure that enough light is available during installation. Remove obstacles and dirt. Make sure nobody else is present at the installation site. Other people (children!) may disturb or endangered during installation.**

Necessary tools needed for a correct and easy installation:

Electric tools

drill
impact drill
cordless drill

Hand tools

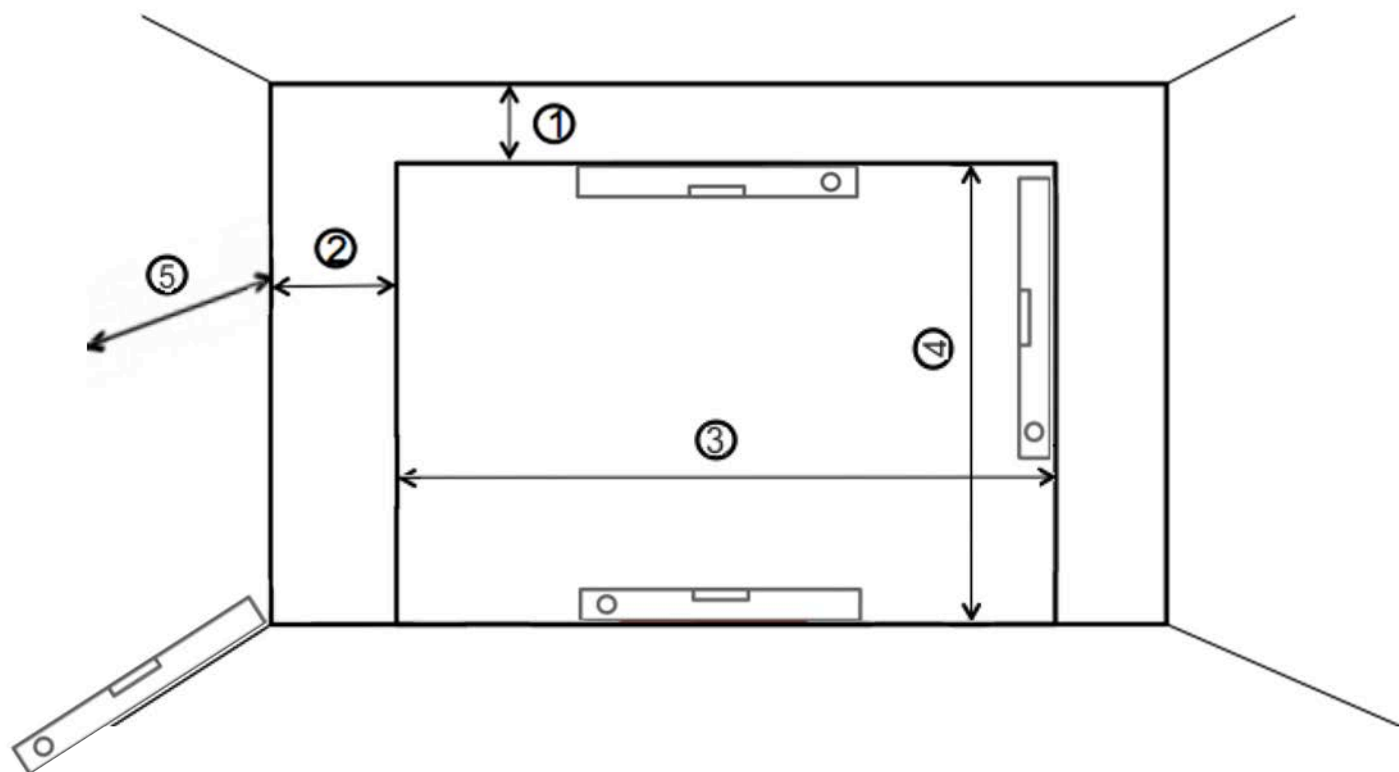
combination wrench 10,13 mm
socket wrenches 10,13mm
Allen key set
nutsetter 10,13 mm + bits adapter extension
combination pliers, water pump pliers, hammer

spirit level
tape measure
knife
pencil
clamps

The characteristics of the substructure for the installation of garage doors and industrial doors are essential for the subsequent proper functioning of the door!

- Flatness of the surface
- For the installation of sliding doors, the side walls, lintel and floor must be as plane as possible. The sideroom and headroom must lie in one plane. The maximum permissible deviations in the evenness of the sideroom and lintel are +/- 1mm / m, tolerable floor deviations are +/- 1 mm over the whole width of the floor. For larger deviations sufficient tightness of the floor seal is not guaranteed.
- The masonry substrate must be firm and dry. There should be no electrical wires in the masonry sites.
- Larger mounting surface irregularities (within acceptable tolerances) may affect the proper operation of the doors. Fix the fitting profiles with 12mm dowels to the masonry.

**Before installation check dimensions.
Wall must be plane.**



1 : headroom

2 : side room

3 : width

4 : height

5 : side space

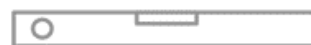
Tools required:



socket wrench



opened-end wrench



laser level or spirit level



drill

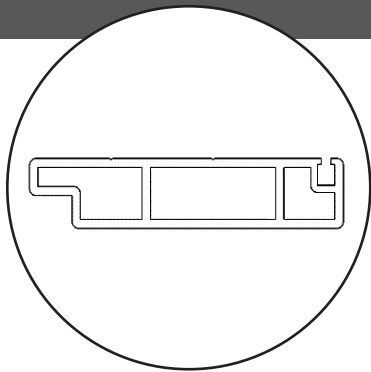


cruciform screwdriver



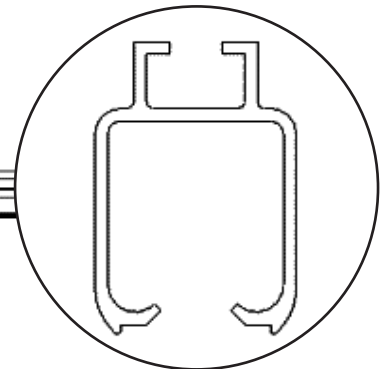
mallet

PACKAGE CONTENTS

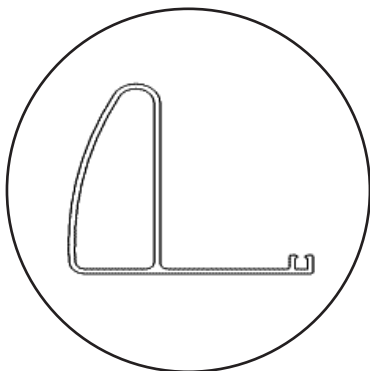


Frame section

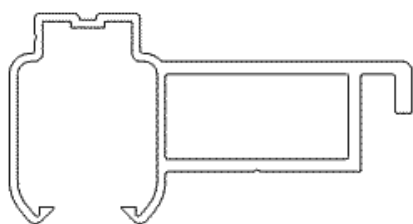
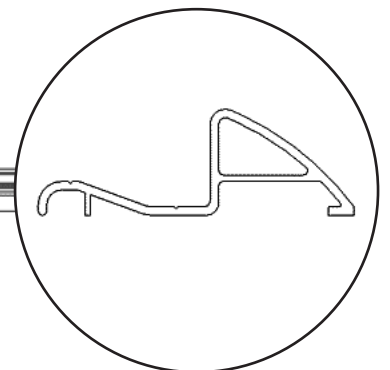
Single garage door jamb section



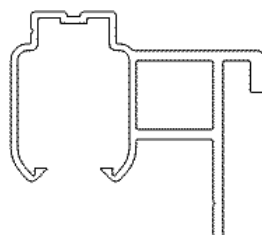
Box track section



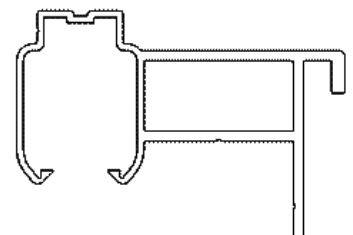
Threshold section



Curve assembly junction bracket



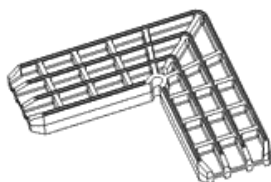
**Face mounted box track bracket -
garage door**



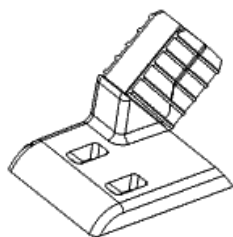
Face mounted box track bracket - side wall

PACKAGE CONTENTS

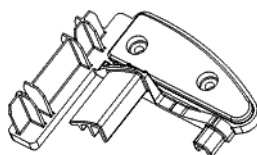
Units for assembly:



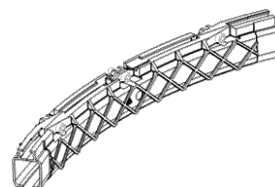
corner frame joint 2x



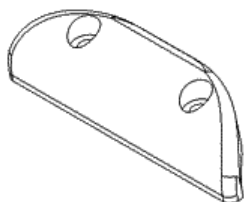
curve assembly support
plate: 1 pair



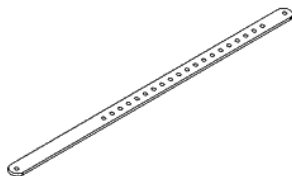
frame/threshold joint:
1 pair



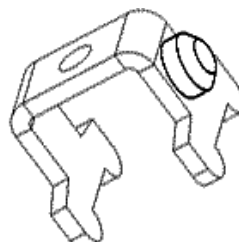
curve 2x



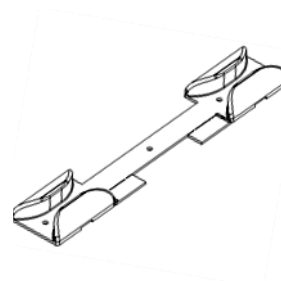
guide shoe 5x



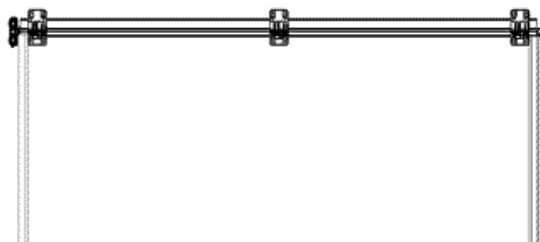
multi-position arm
6 mm thick



track end stop 1x



slide away guide



panel 5x

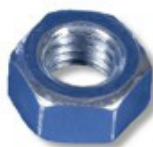
Fastenings:



Hex head bolt M8 20x



Washer M8 2x



Hex nut M8 2x



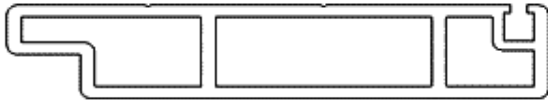
Hex head tapping
screw 32x



self drill screw
3.5 x 13 mm

MOUNTING BRUSH SEALS

Components necessary:



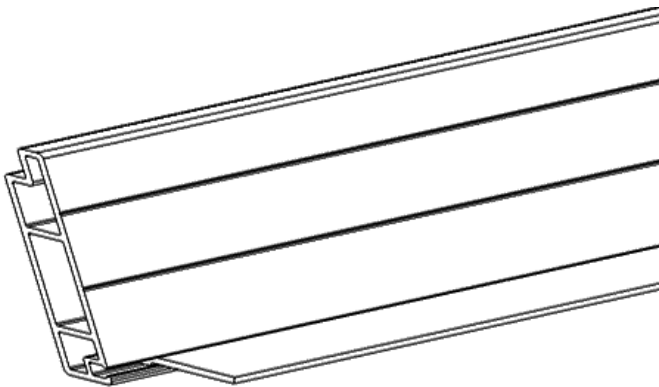
frame sections



L34 brush



L24 brush



Slide the brushes into the grooves of the frame sections.



If you do not install the single garage door jamb, L24 brushes must be inserted in the frame opposite the motor.



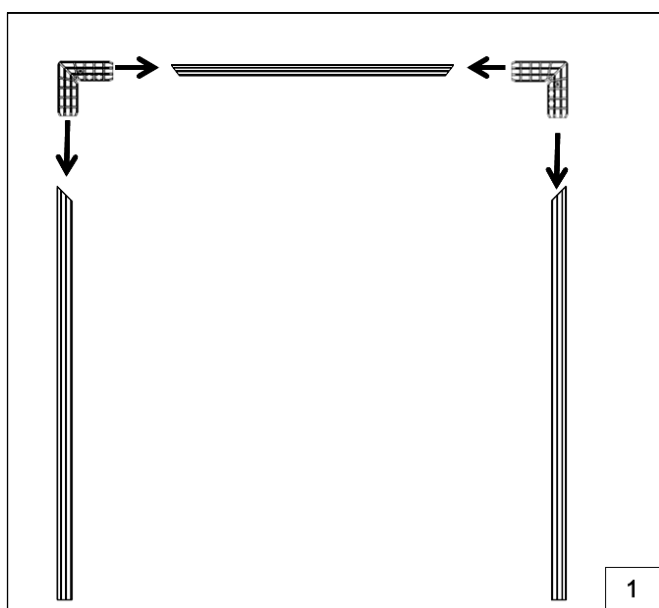
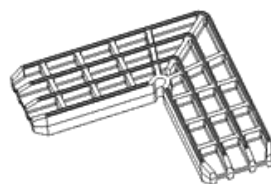
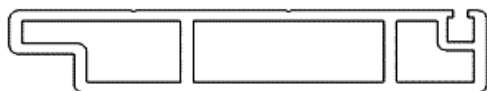
Mount the L34 brushes in the horizontal frame and L24 in the vertical frame on the opening side (side wall).



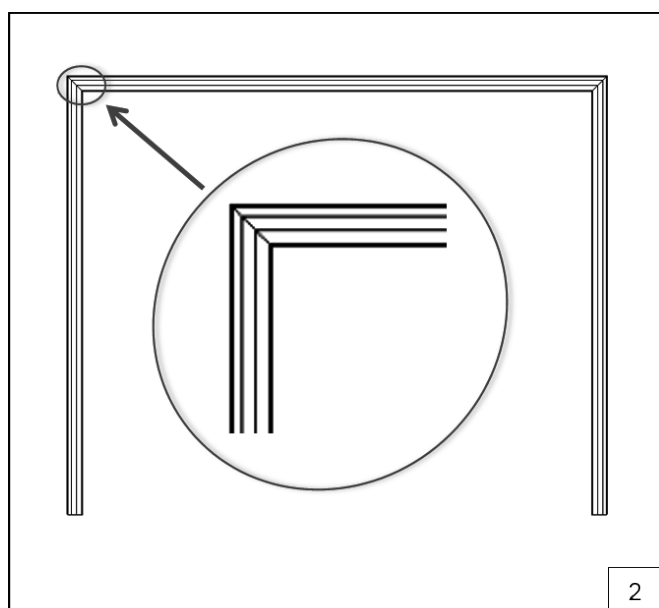
ASSEMBLY OF SUPPORT FRAME

**Components
necessary:**

frame section
corner frame joint



Insert the corner frame joints into the frames.



**Once the corners are inserted, push frames
together to join completely.**

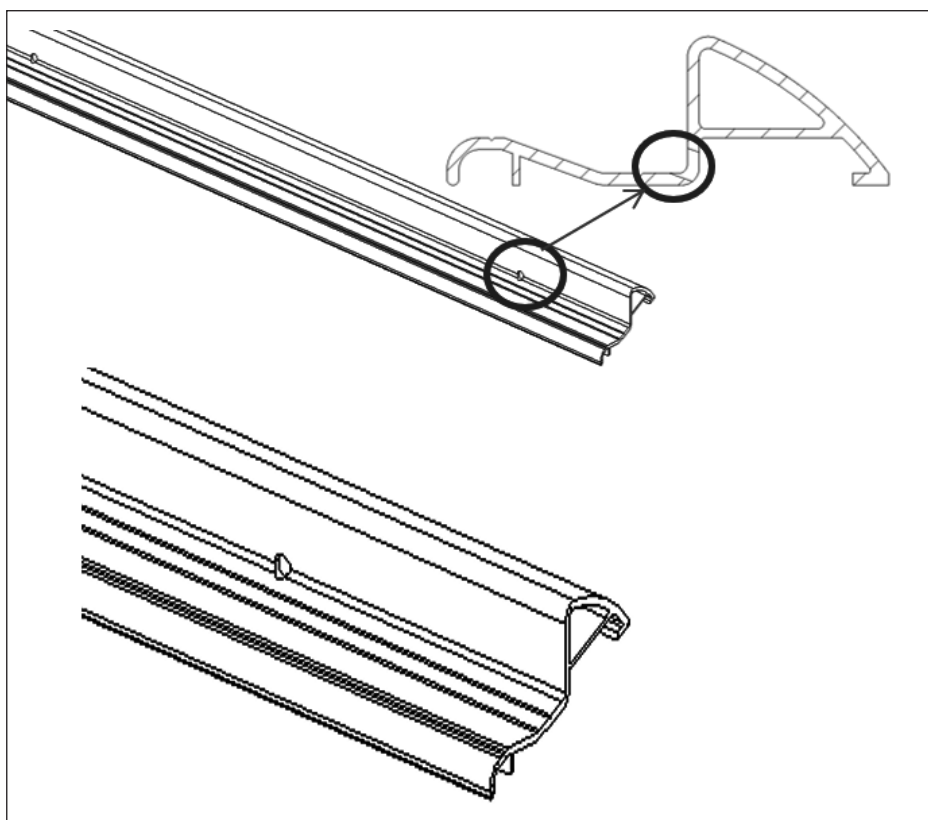
MONTAGE CADRE SUPPORT

Components necessary:

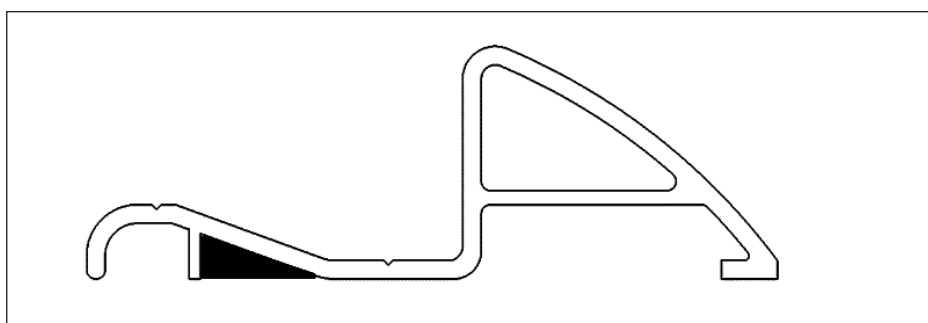
threshold section



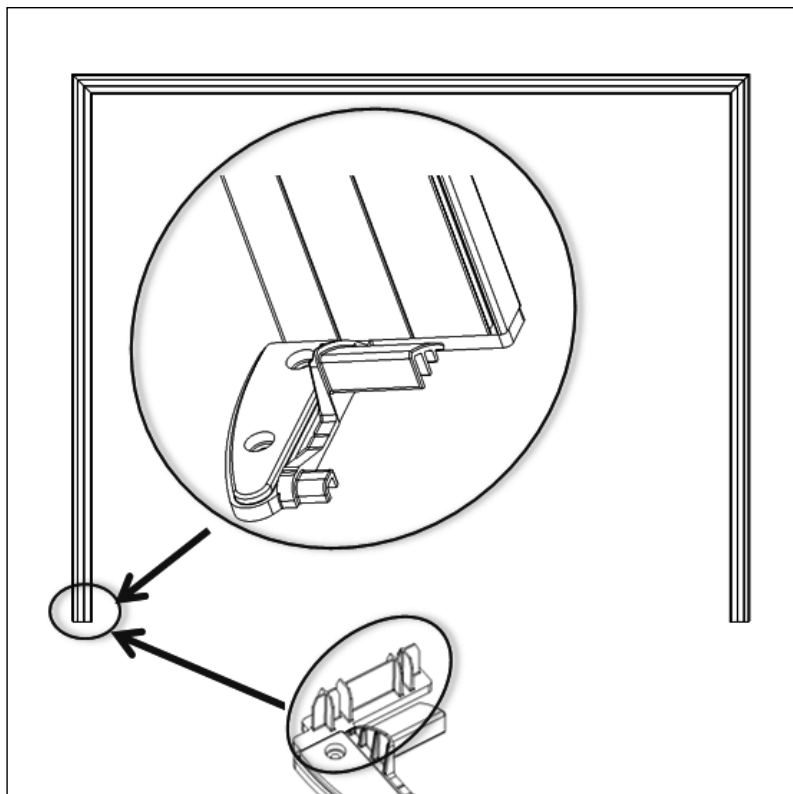
Drill holes Ø 4 or 5 mm every 500 mm in threshold section to drain away the water.



Fill up the grey shape with silicone seal to ensure watertightness.

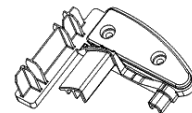


MOUNTING FRAME

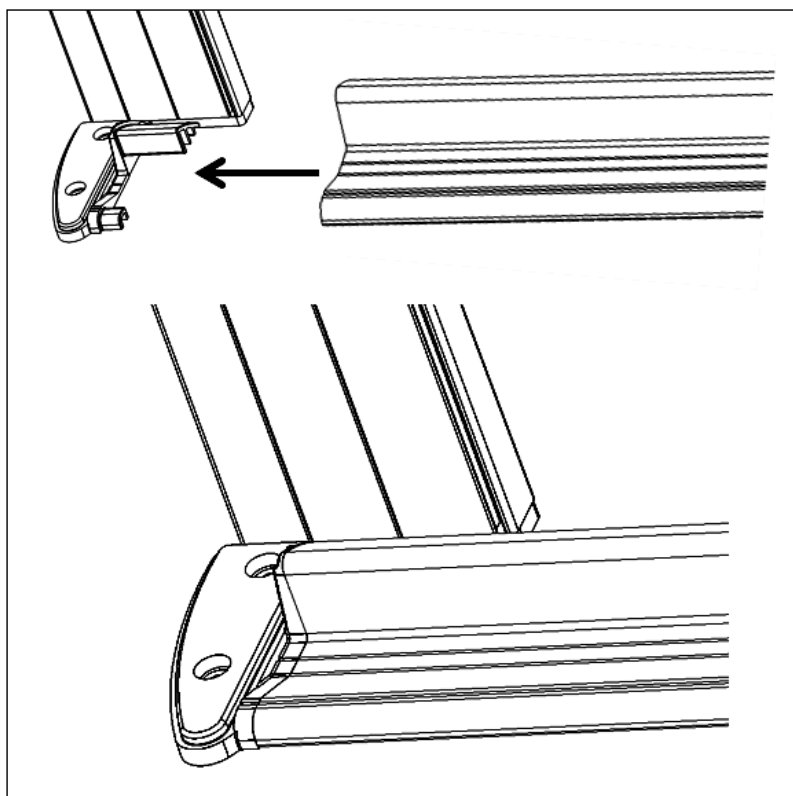


Components necessary:

threshold section
frame/threshold joint :
1 pair

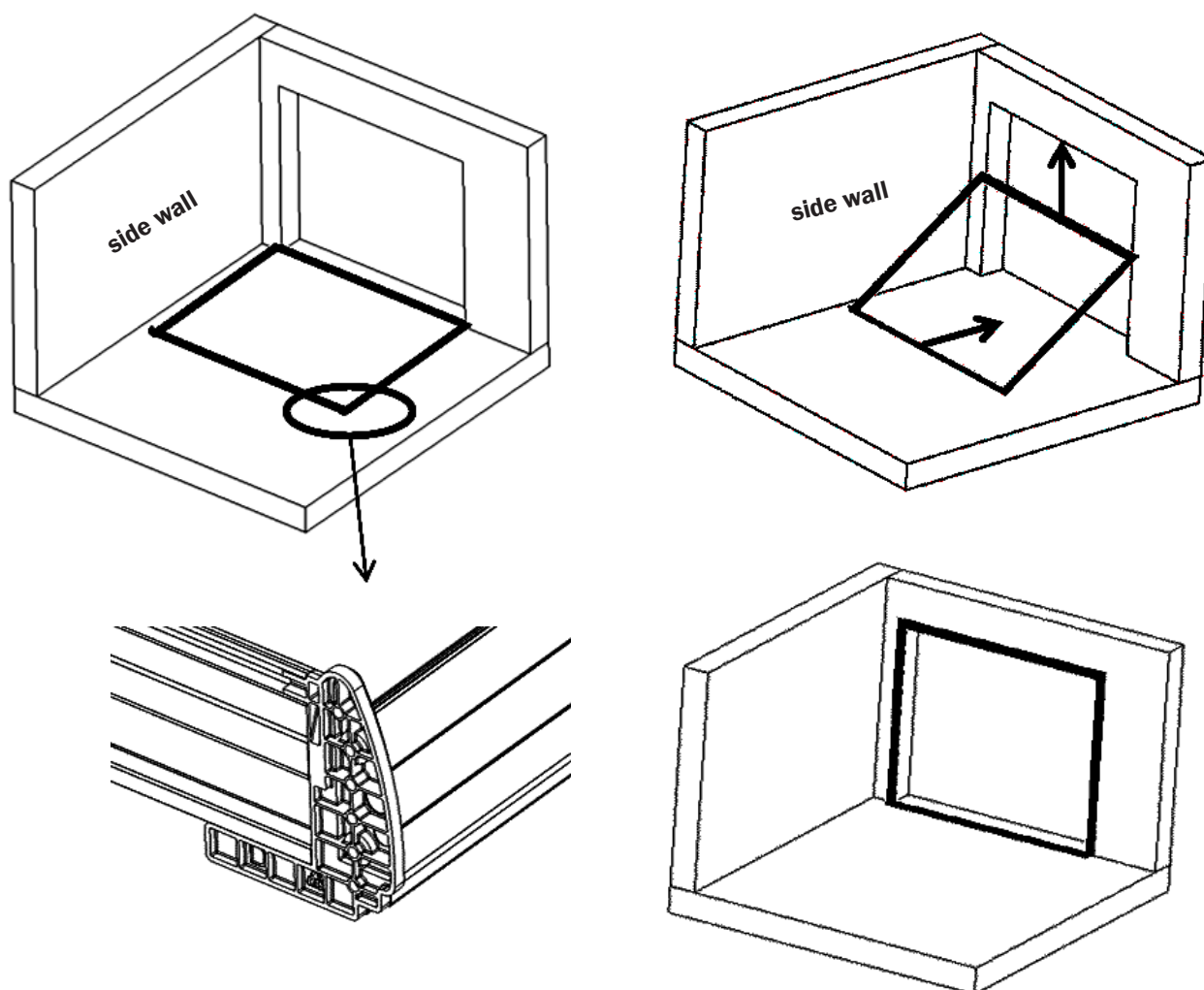


- 1 Insert the upright portion of joint into frame.



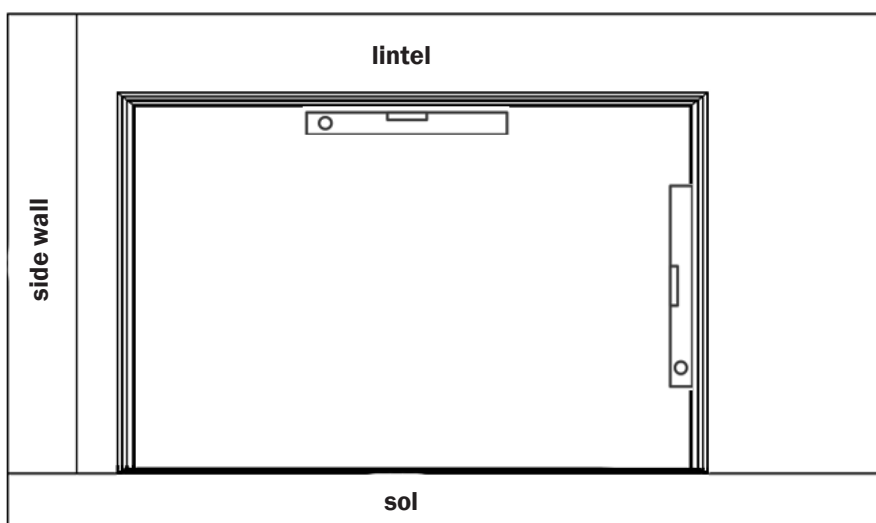
- 2 Then insert threshold into joint.

FITTING THRESHOLD TO THE GROUND



- 1 Place the frame on the ground**
- 2 Lift to place against wall**

frame in position



FITTING THRESHOLD TO THE GROUND

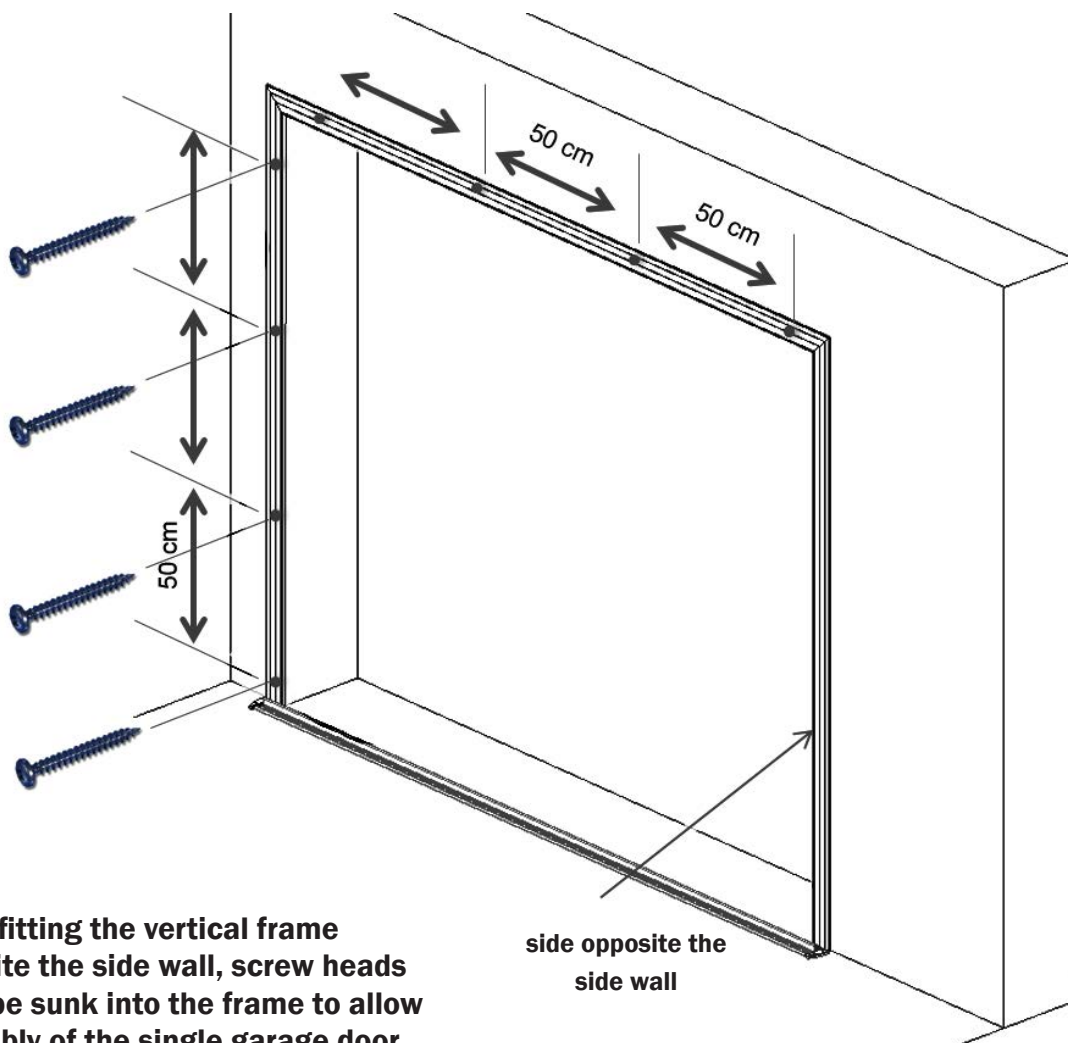
Tools necessary:



Fasteners necessary:
(not included)
fastening screws

WARNING

Make sure that walls are plane before fitting frame to interior wall.



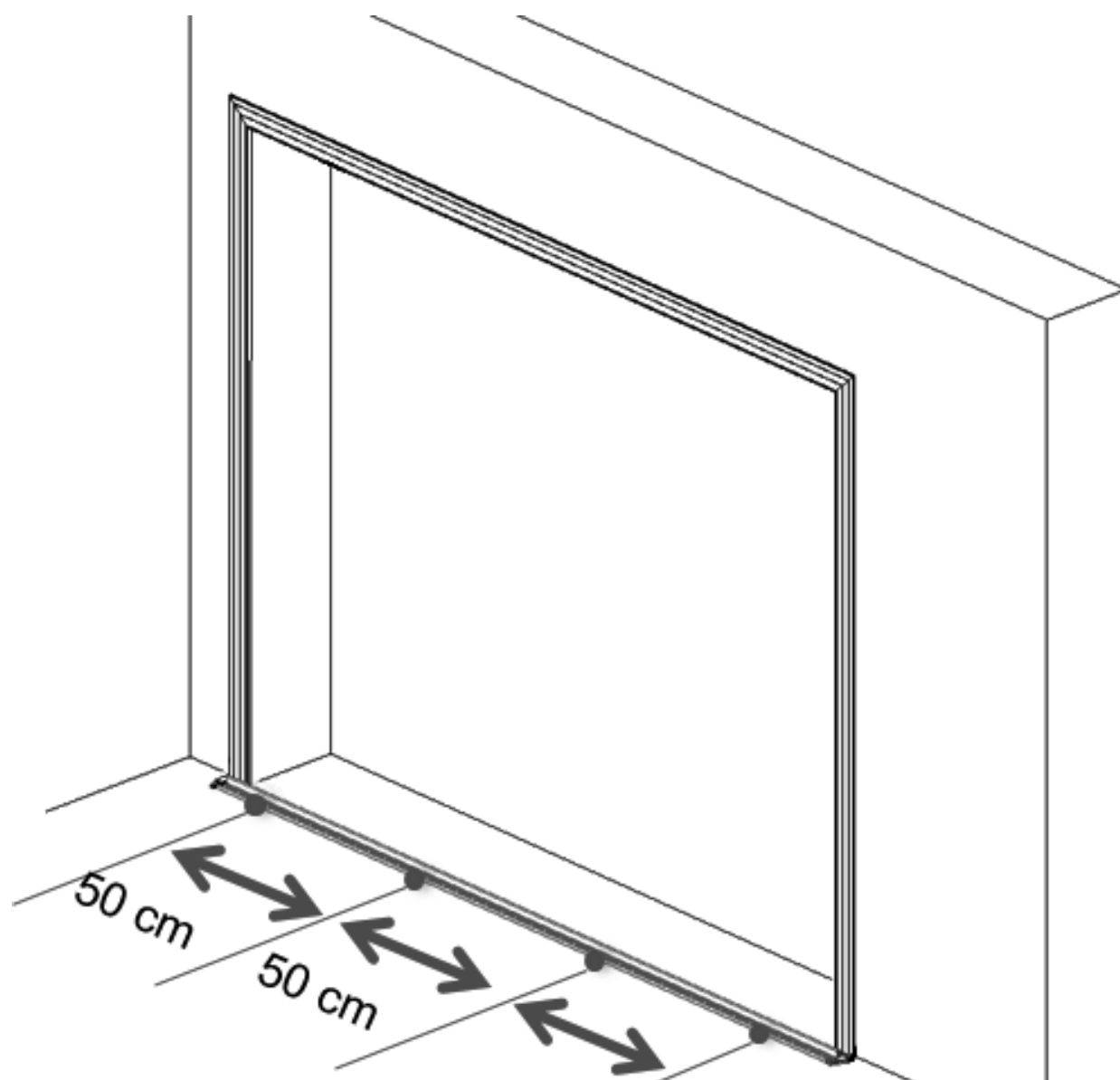
When fitting the vertical frame opposite the side wall, screw heads must be sunk into the frame to allow assembly of the single garage door jamb.

side opposite the side wall

Components necessary:



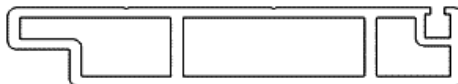
fasteners necessary:
(not included)
fastening screws 4x



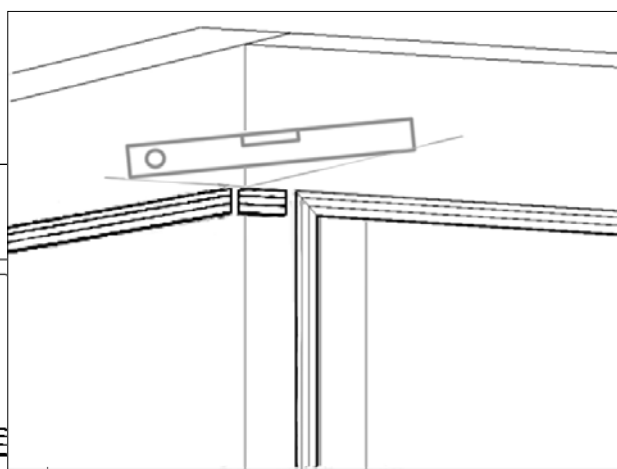
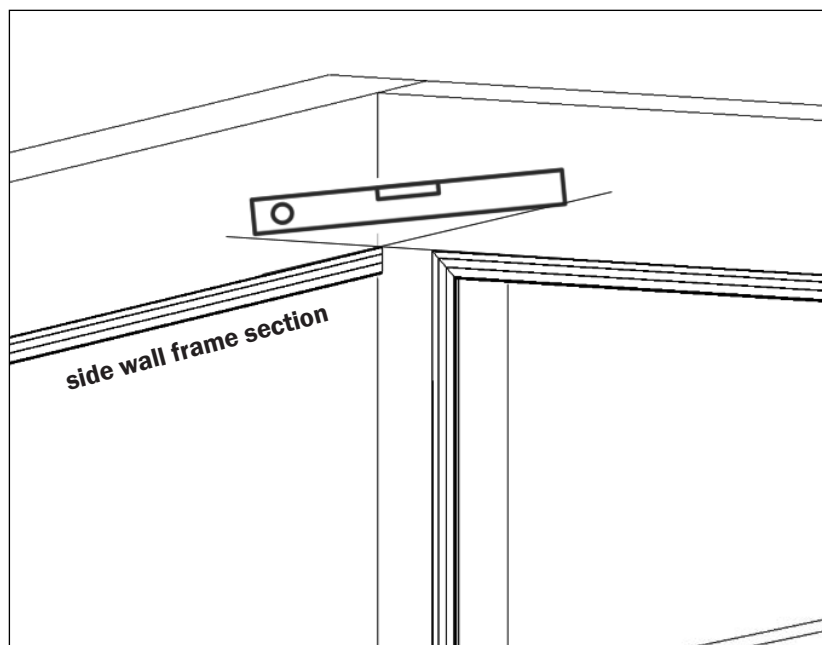
MOUNTING BOX TRACK

Components necessary:

frame section
fasteners necessary : (not included)
fasting screws 4x

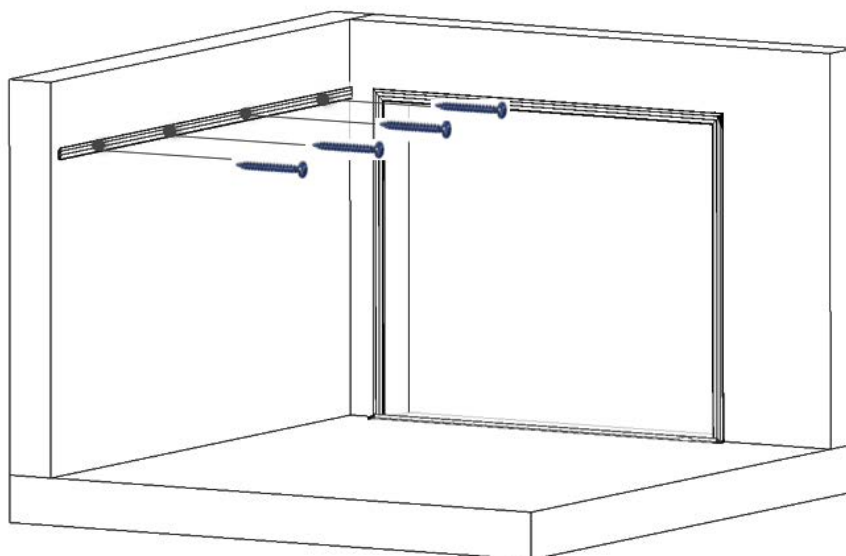


In the lining it is necessary to mount on an auxiliary frame section for arch attachment.



1 Align the side wall frame with the horizontal frame.

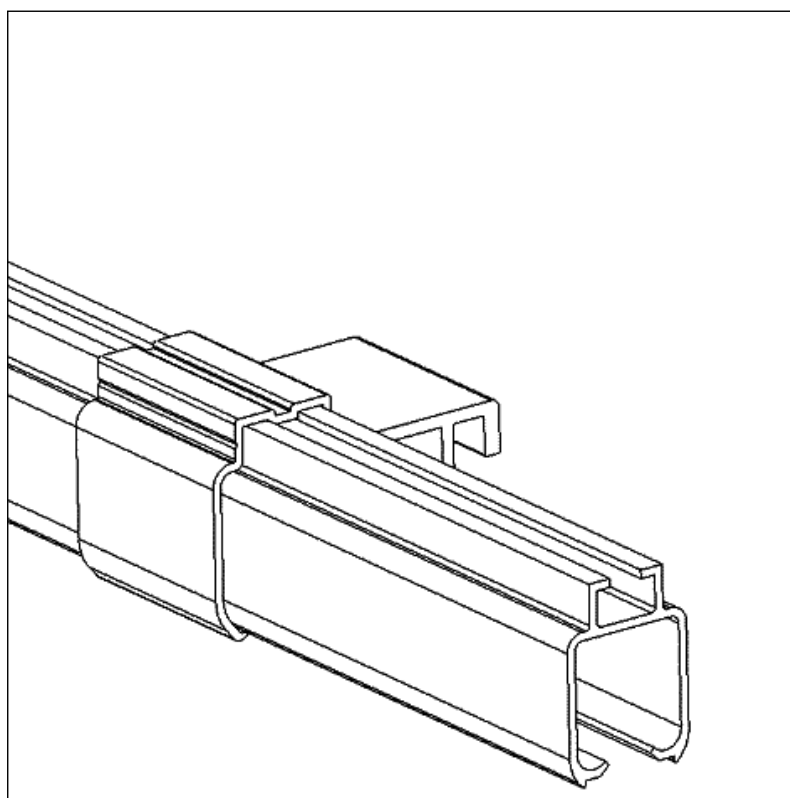
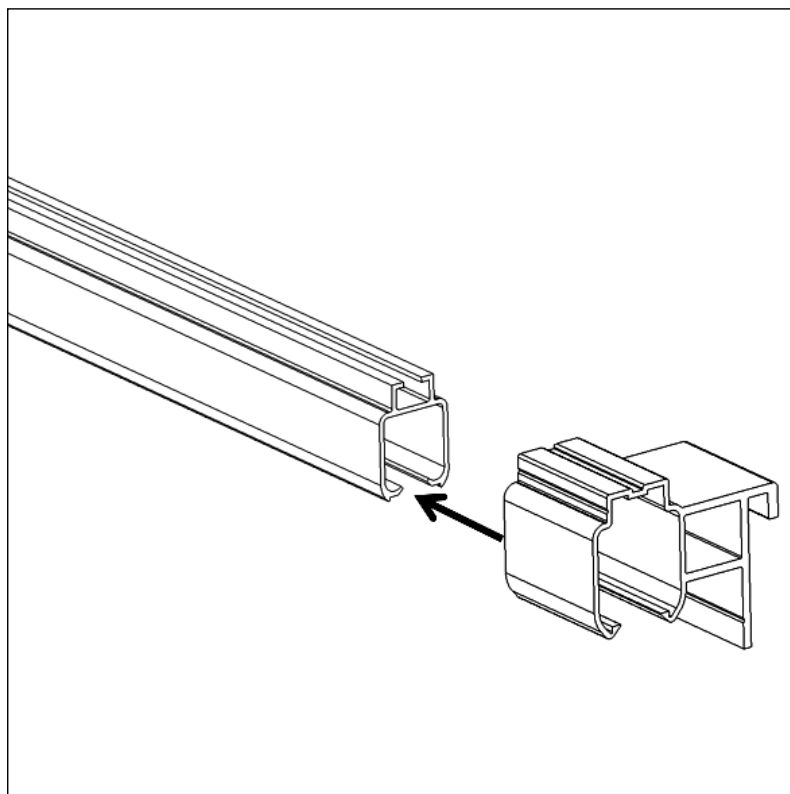
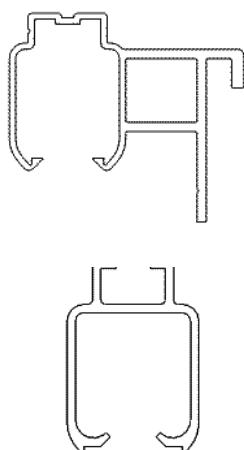
2 Secure the side wall frame with screws spaced at approximately 50 cm.



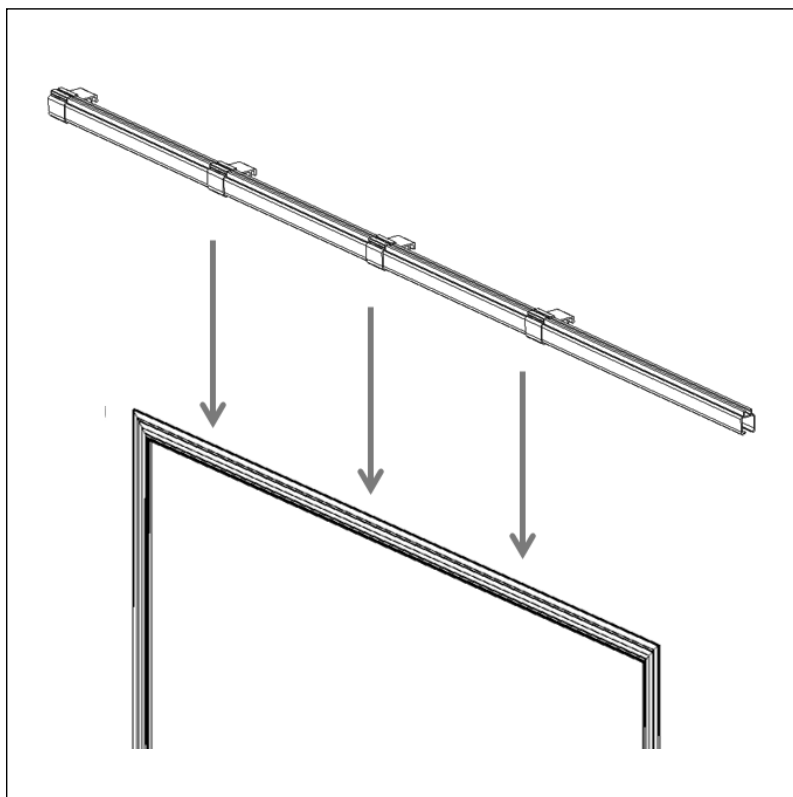
MOUNTING BOX TRACK

Components necessary:

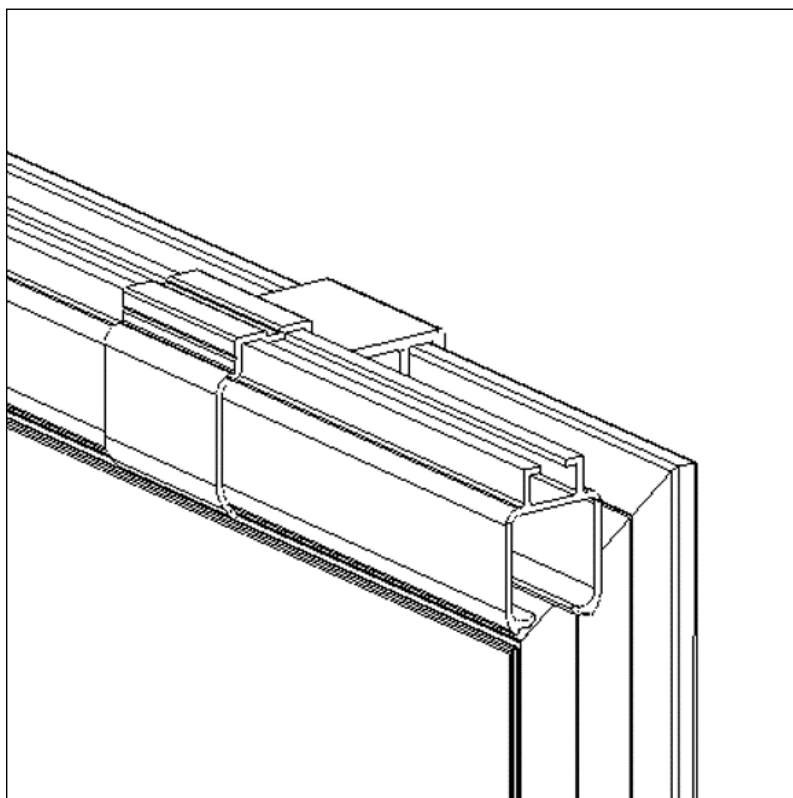
face mounted box track bracket
- garage door
box track



ASSEMBLY OF TRACK – GARAGE DOOR



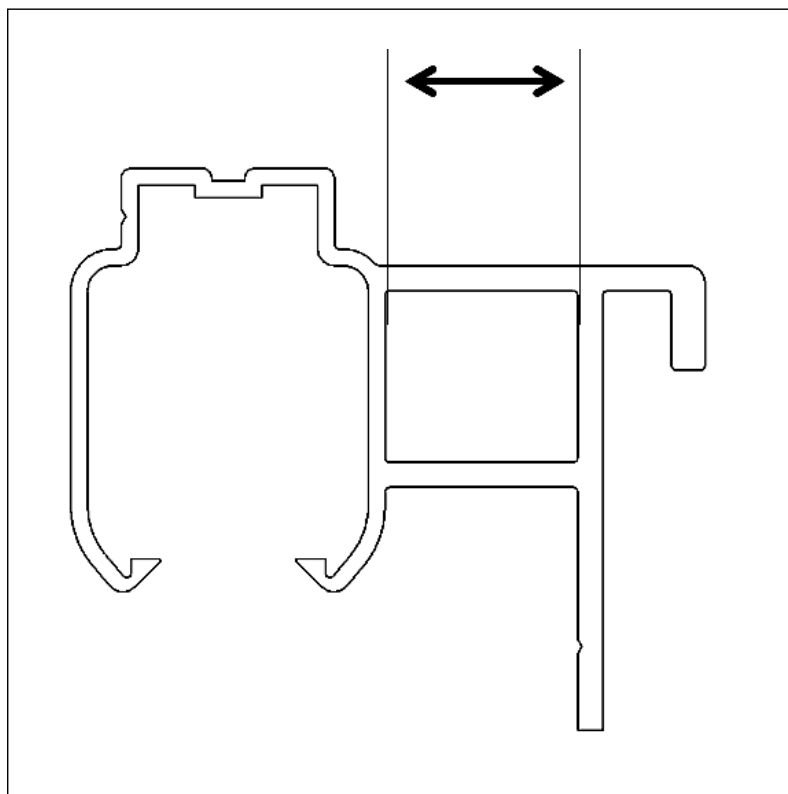
Once the box track has been inserted into the face mounted brackets, slide to position the brackets on the frame.



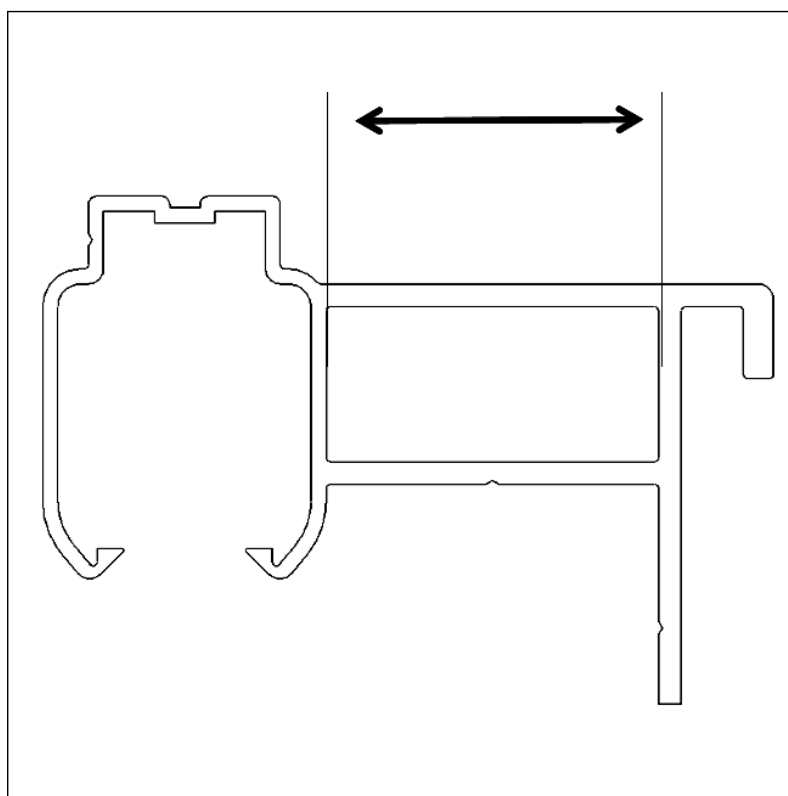
ASSEMBLY OF TRACK

Insert the side wall box track into the face mounted brackets and position on side wall frame.

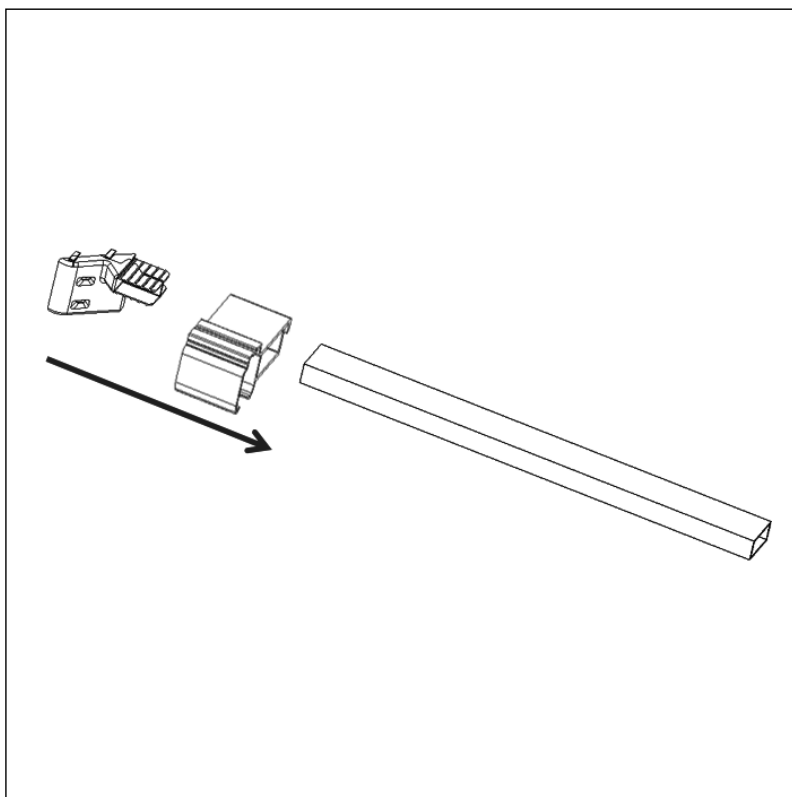
**face mounted box track bracket
- garage door**



**face mounted box track bracket
- side wall**

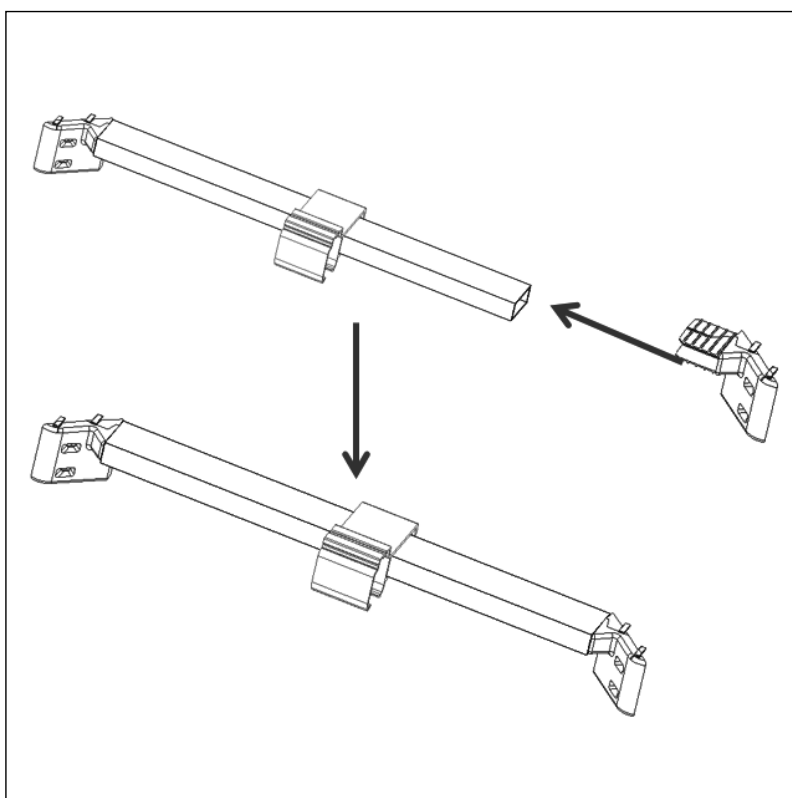
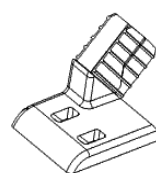
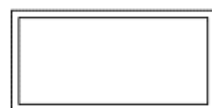
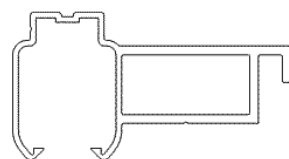


ASSEMBLY OF CURVE SUPPORT ASSEMBLY

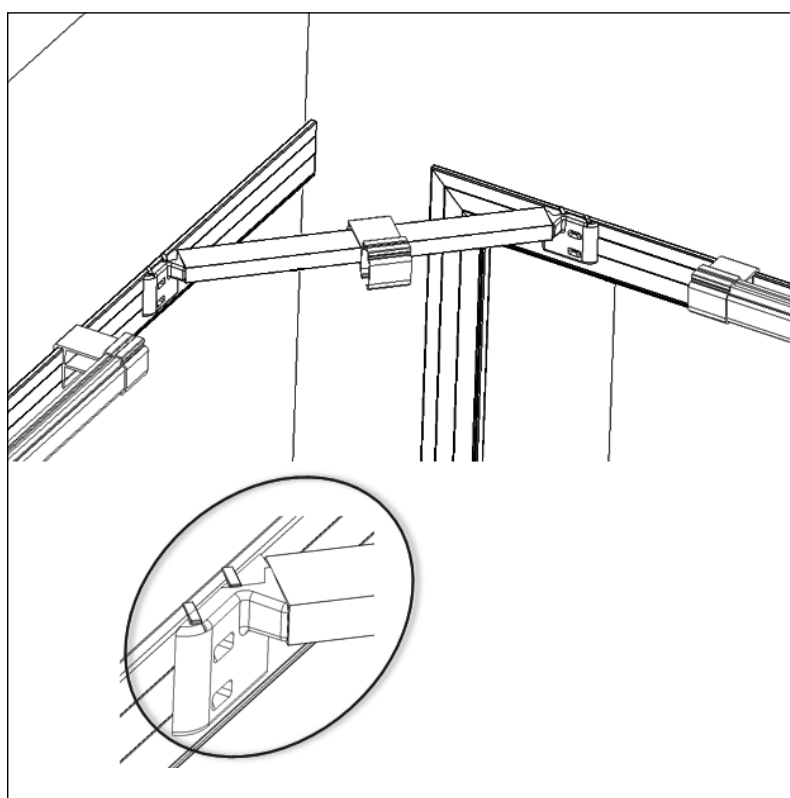
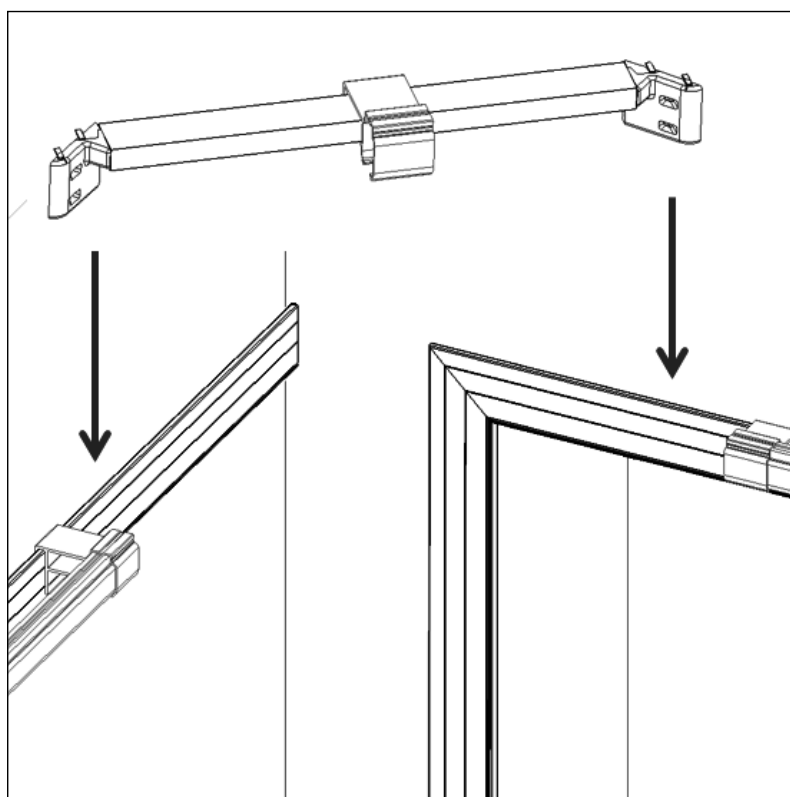


Components necessary:

curve assembly support plates R+L: 1 pair
curve assembly junction bracket 1x
rectangular support bar 1x
self drill screws 3,5 x 13 mm, 4x



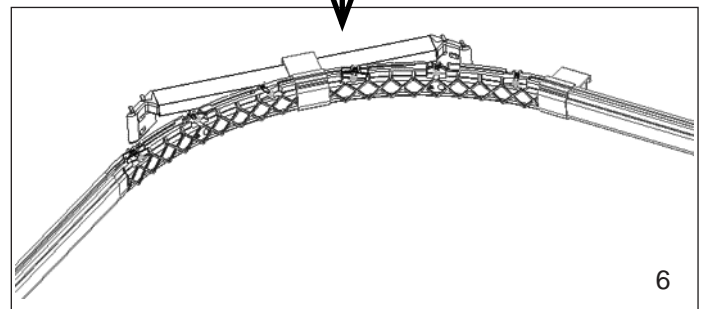
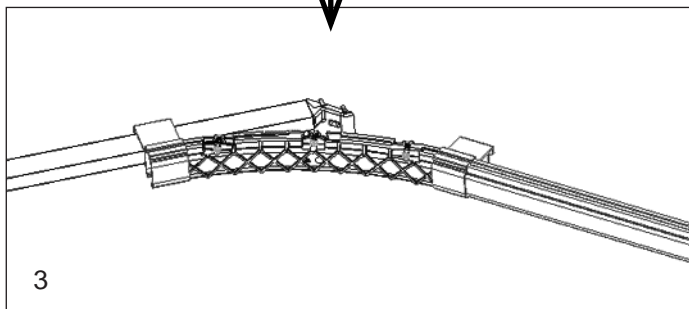
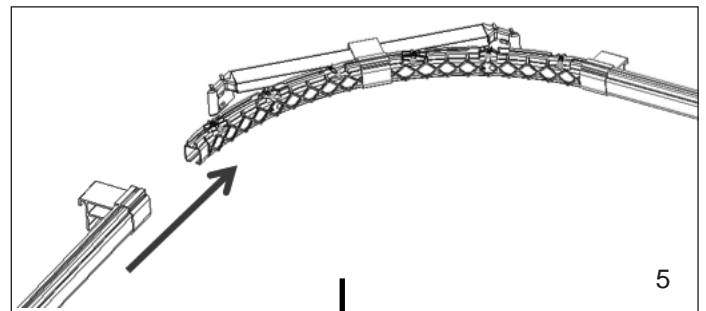
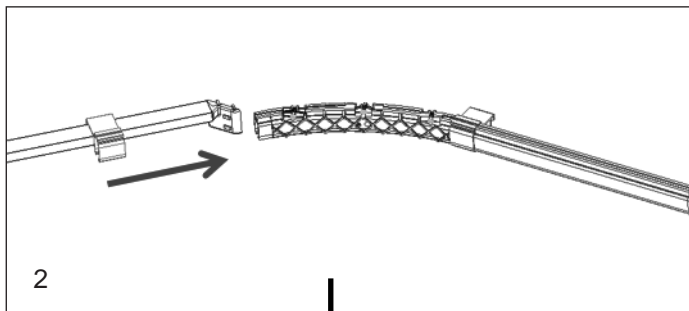
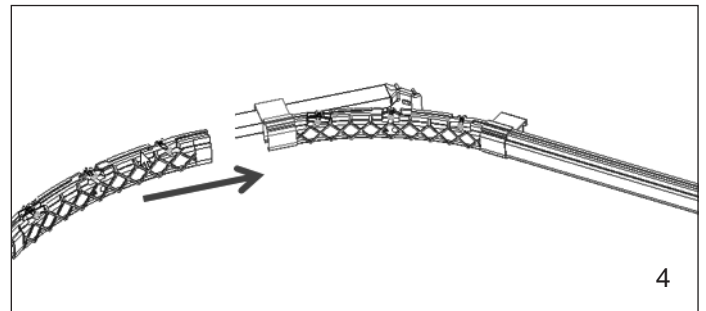
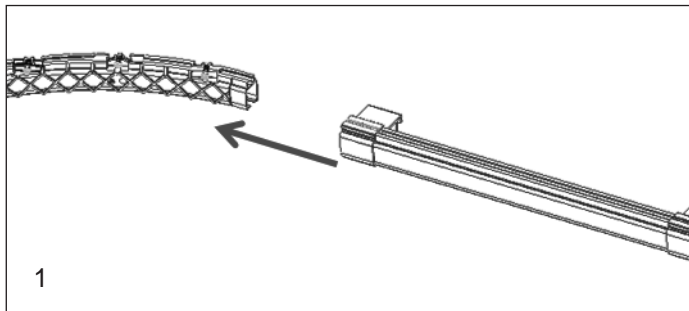
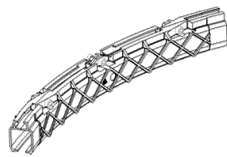
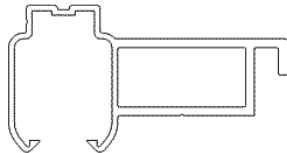
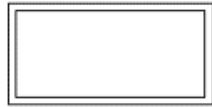
MOUNTING CURVE SUPPORT ASSEMBLY



ASSEMBLY OF CURVE ASSEMBLY WITH SUPPORT ASSEMBLY

Components necessary:

Rectangular support bar 1x
Curve assembly junction
bracket 1x
Curve

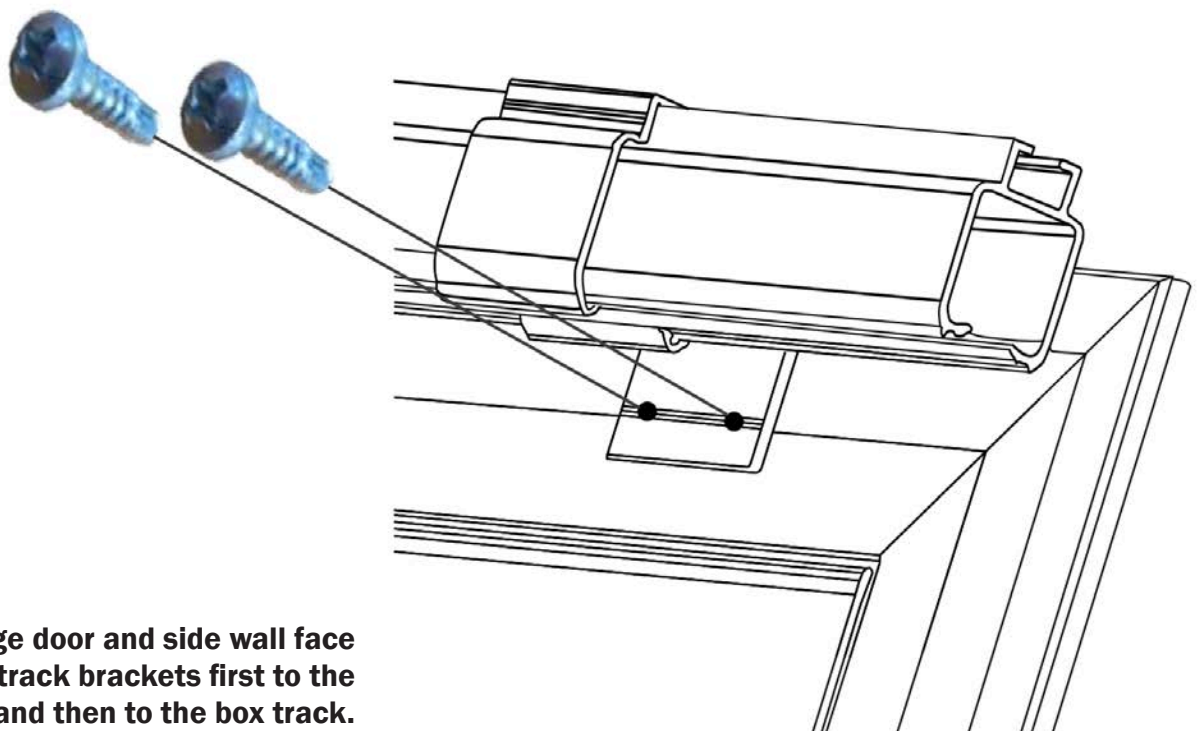
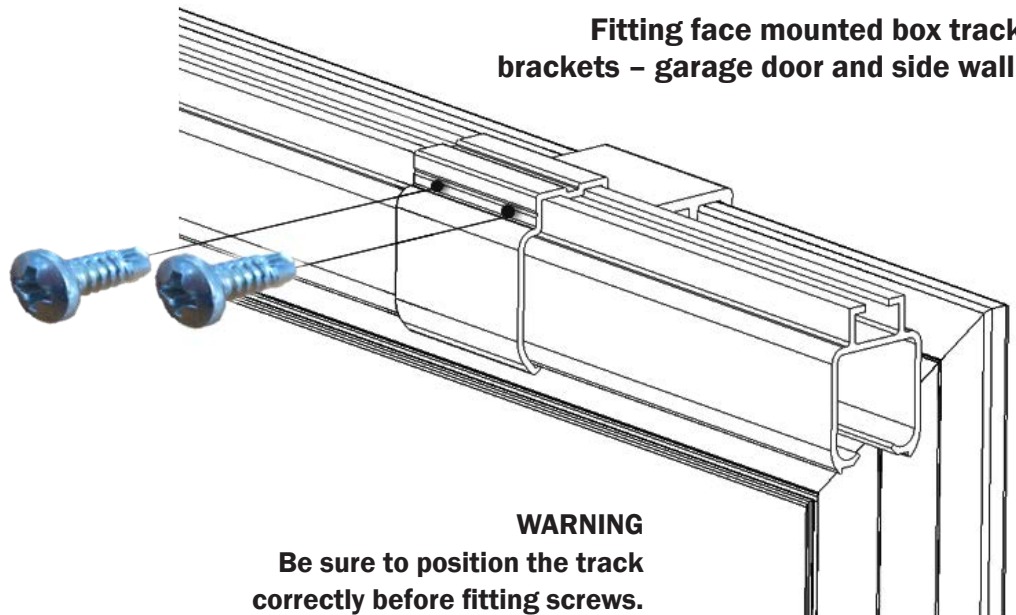


FITTING TRACKS

Tools necessary:

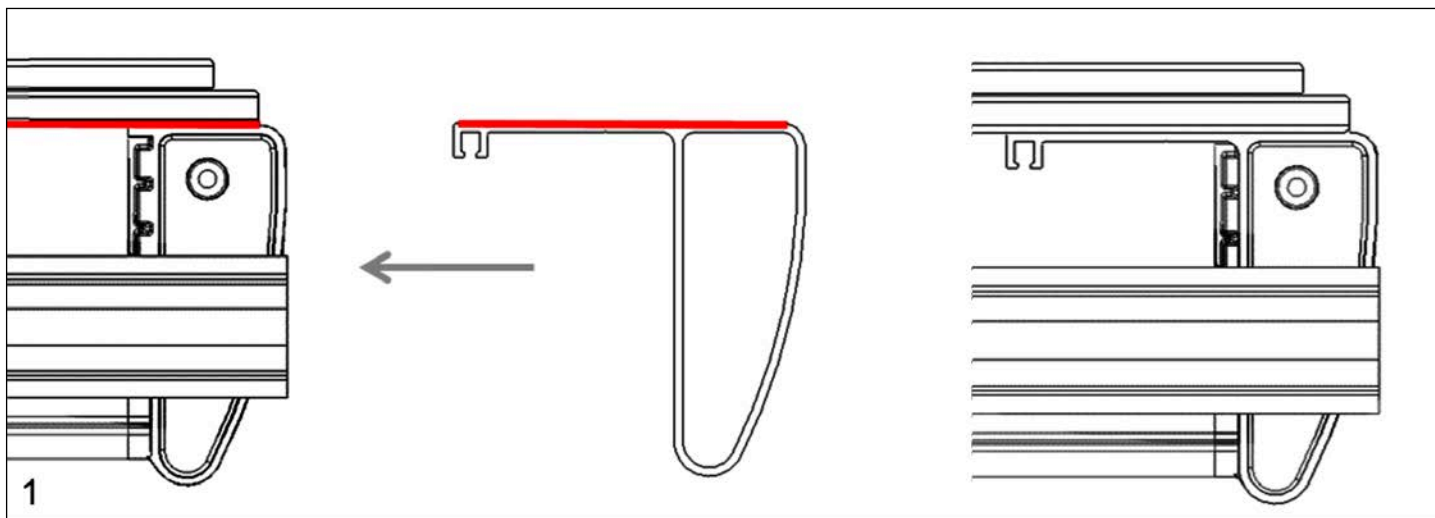
Drill
Fasteners necessary:
self drill screws 55x

Fitting face mounted box track
brackets – garage door and side wall.

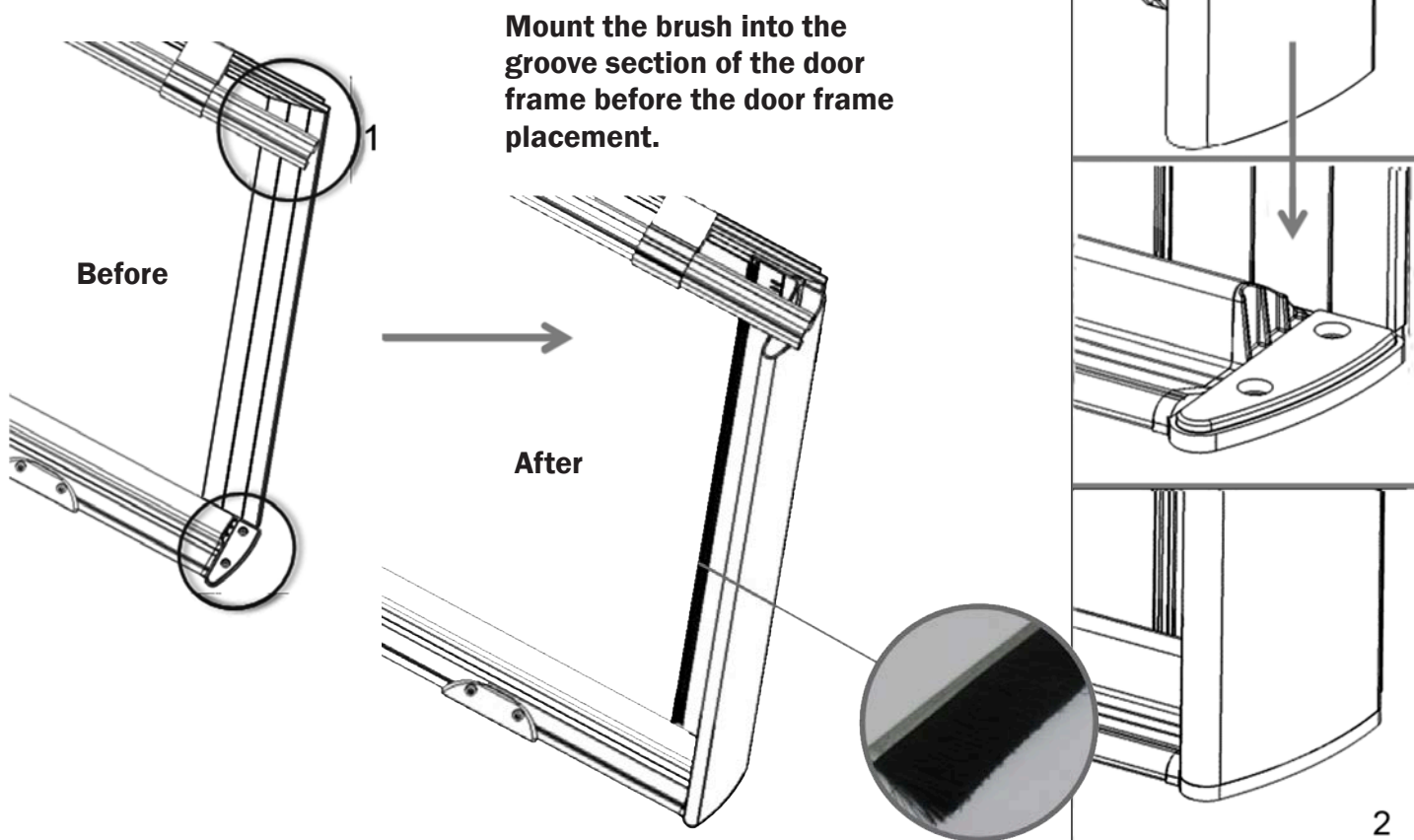


Fit the garage door and side wall face
mounted track brackets first to the
frame and then to the box track.

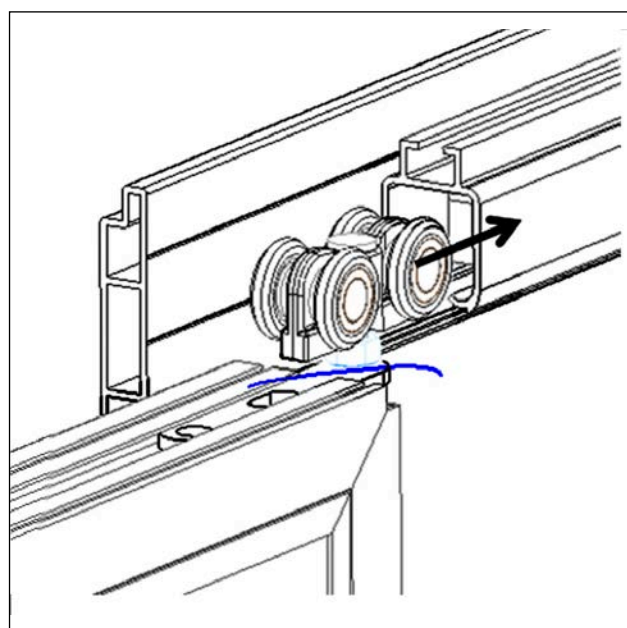
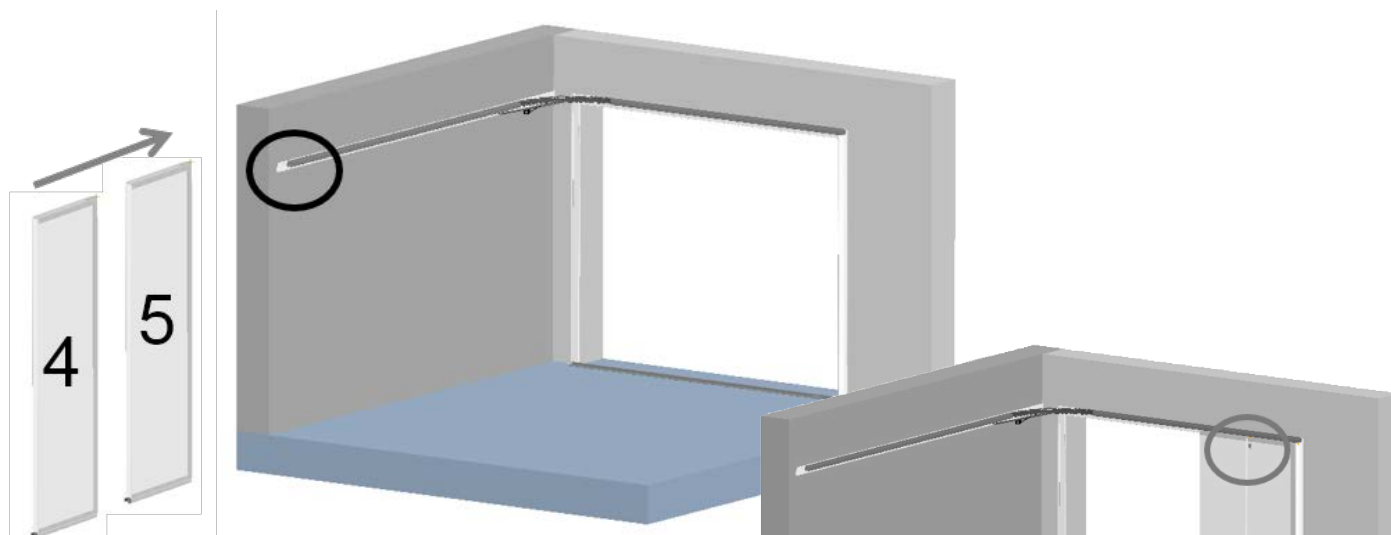
MOUNTING THE SINGLE GARAGE DOOR JAMB



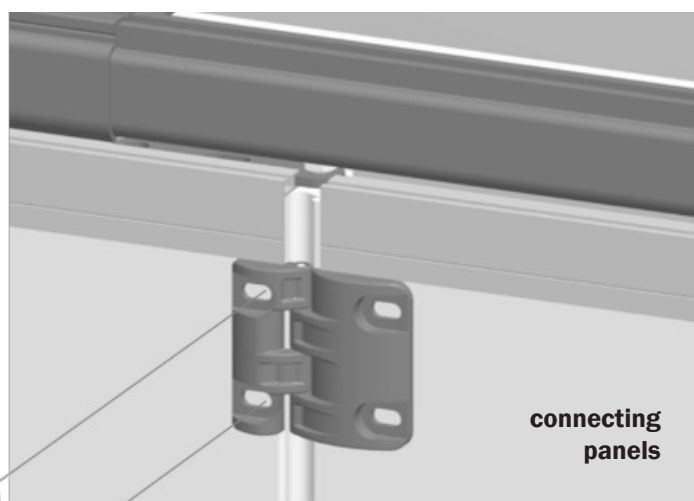
Position the garage door jamb as shown above. Press the bottom of the “L” section up against the interior frame (as shown in red) and fit the door jamb into the frame/threshold joint (as shown). Then fit the door jamb with self drill screws 3.5 x 13 mm.



MOUNTING PANELS



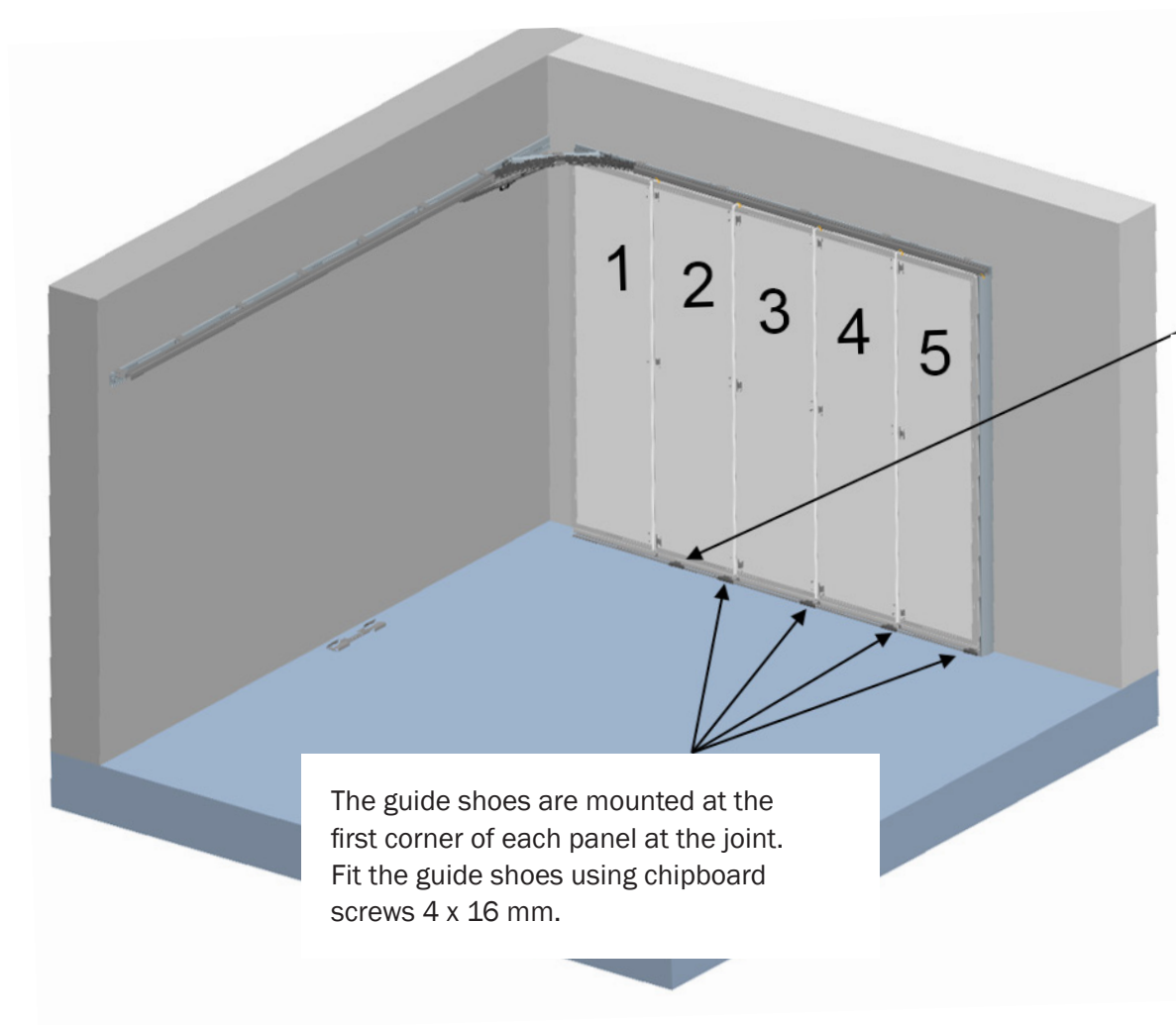
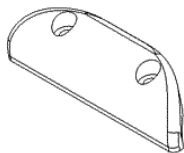
**Insert swivel ball-bearing hangers
in the track.**



MOUNTING GUIDE SHOES

Components necessary:

guide shoe
Fasteners necessary:
chipboard screw M4
16 mm 10x



The last guide shoe is mounted 150 mm from the one before it.

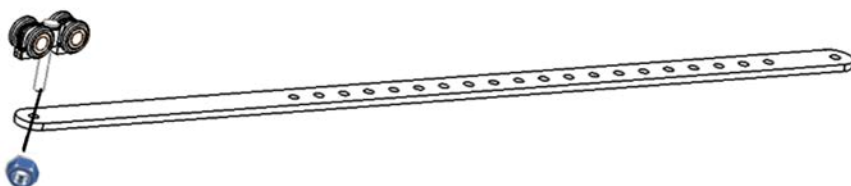
MOUNTING THE MULTI-POSITION ARM

Components necessary:

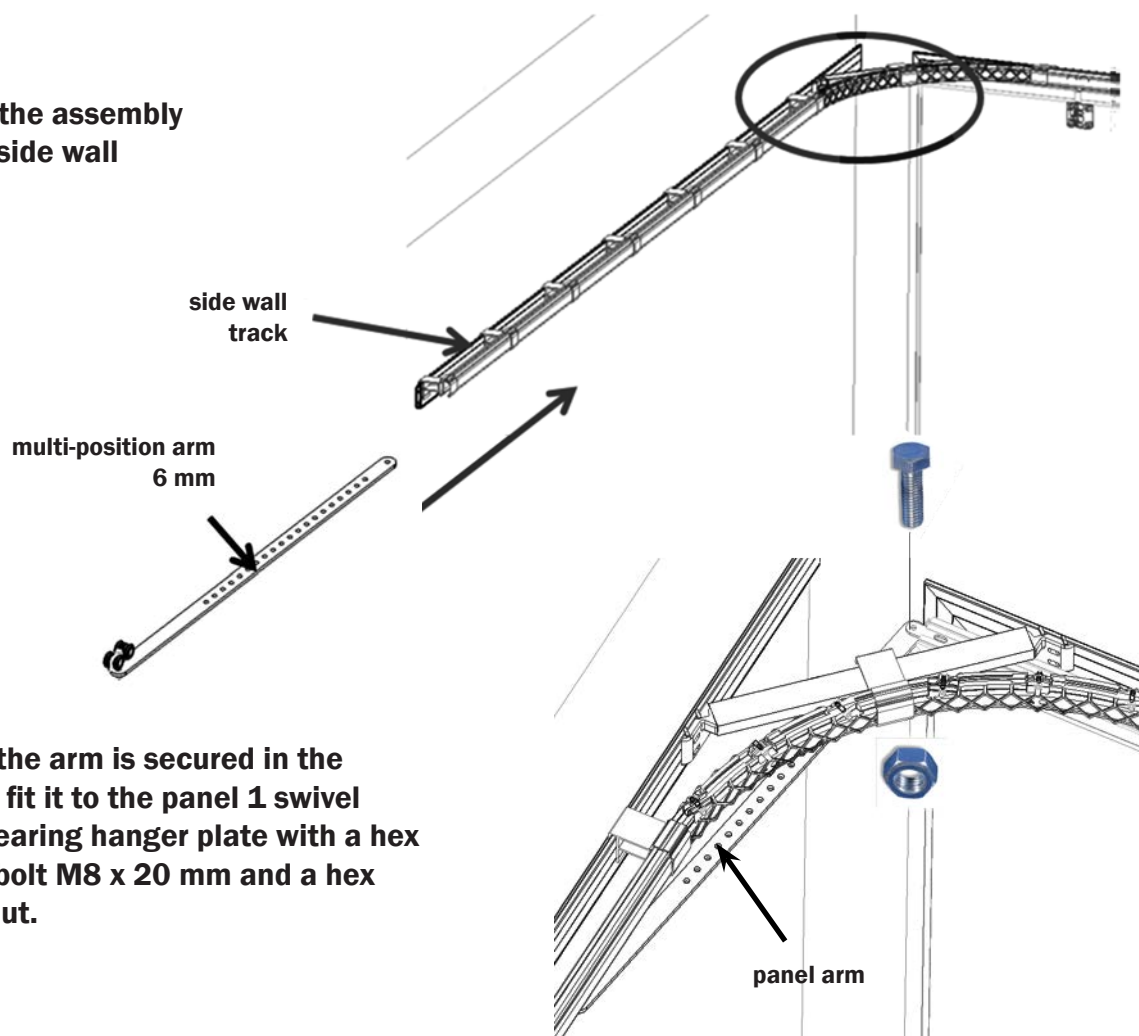
Multi-position 6 mm arm
Fasteners necessary:



Step 1: Mount the swivel ball-bearing hanger at the end of the arm



Step 1: Insert the assembly in the side wall track



Step 2: Once the arm is secured in the track, fit it to the panel 1 swivel ball-bearing hanger plate with a hex head bolt M8 x 20 mm and a hex lock nut.

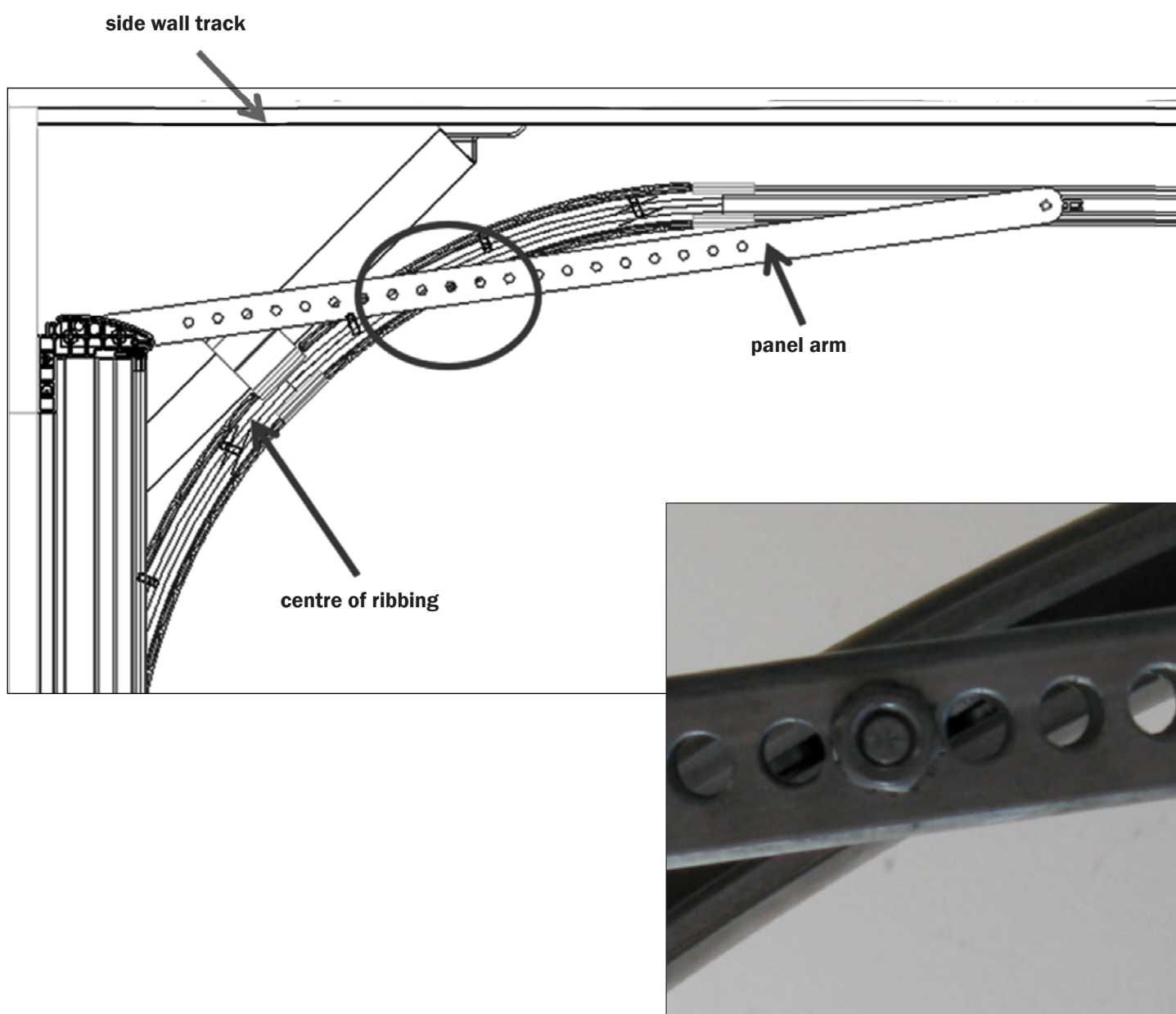


IMPORTANT

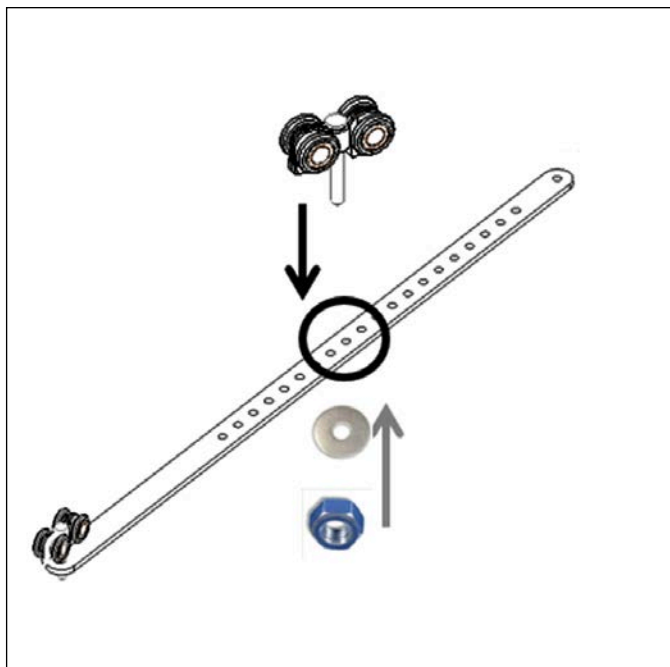
The M8 lock nut must not be completely tightened in order to allow the arm and the hanger support to turn freely.

MOUNTING THE PANEL ARM

Step 3: The sectional garage door must be closed (depending on the amount of side room and the centre position of the bracket slots) before positioning the second hanger, then locate the slot that falls in the centre of the curve's ribbing (pictured below).



MOUNTING THE PANEL ARM

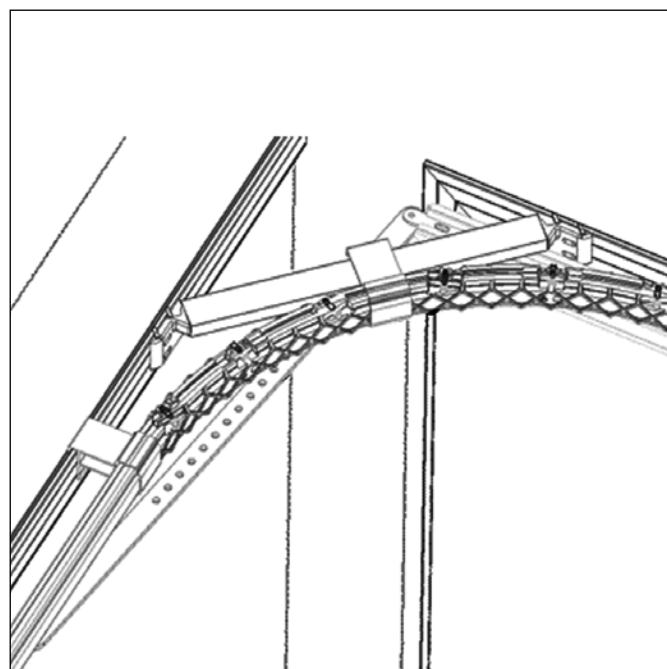
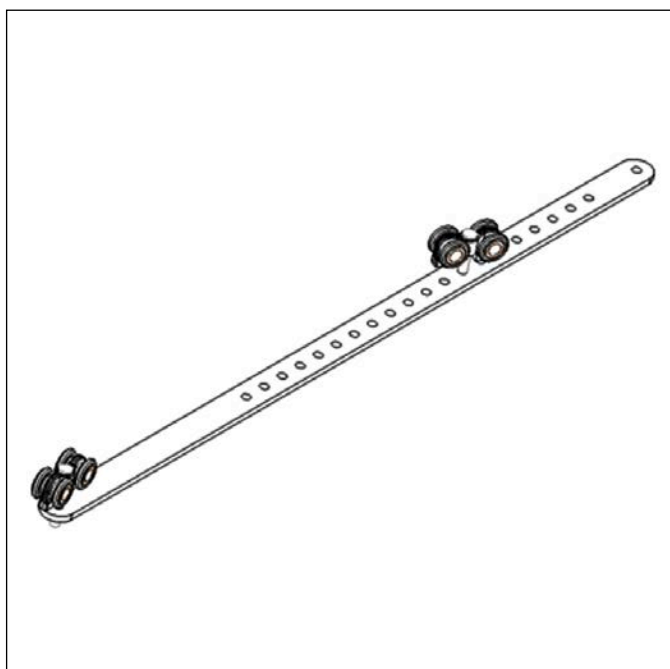


Components necessary:

Fasteners necessary:
Swivel ball-bearing hanger 1x
Washer M8 1x
Hex nut M8 1x



Step 4: After locating the slot, take down the arm and mount the hanger in the corresponding slot.

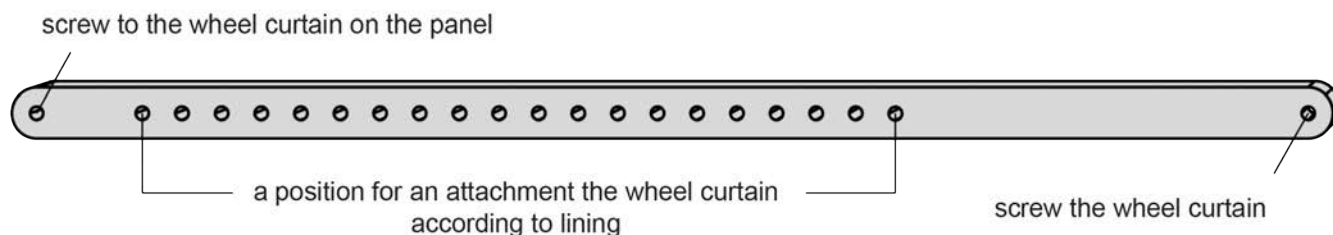


Repeat steps 1 & 2
(Page 23).

MOUNTING MULTI-POSITIONAL ARM FOR LINING FROM 120 TO 640 MM

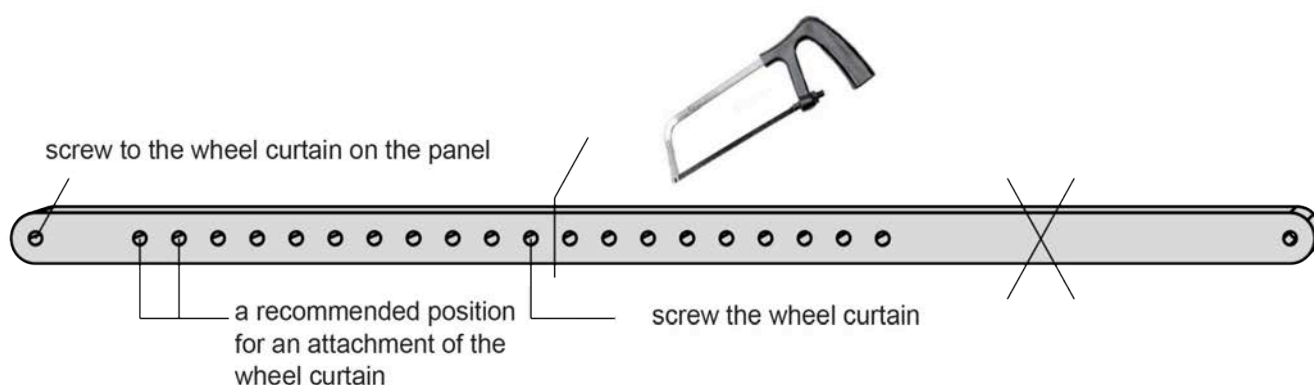
1 for lining 120–440 mm

use multi-positional arm and standard motor arm



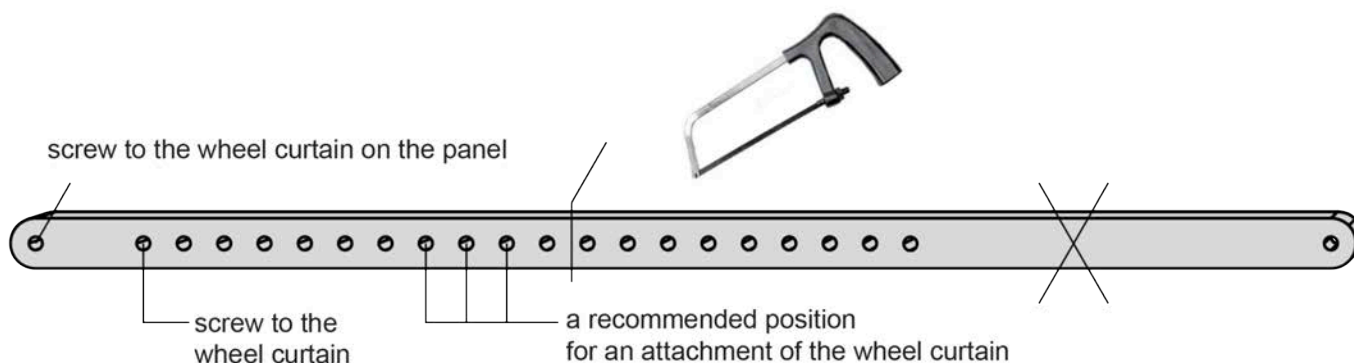
2 for lining 441–495 mm

cut off multi-positional arm (see the picture) and use a motor arm with an appropriate length



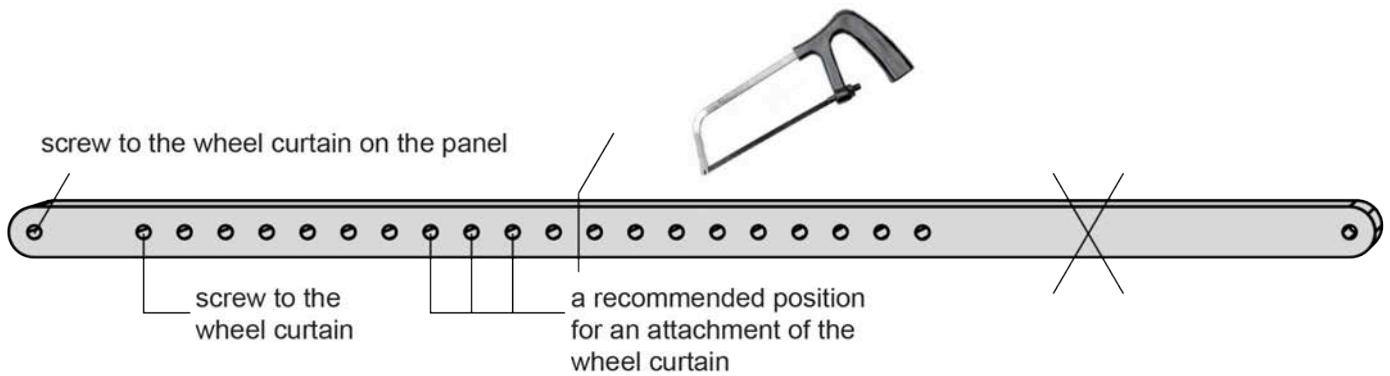
3 for lining 496–550 mm

cut off multi-positional arm (see the picture) and use a motor arm with an appropriate length



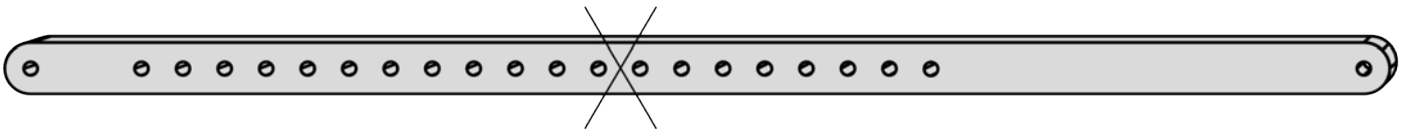
4 for lining 551–640 mm

cut off multi-positional arm (see the picture) and use a motor arm with an appropriate length



5 for lining over 640 mm

remove the multi-positional arm, screw on the wheel curtain onto the curtain rail onto the mount bracket, the length of the arm will be determined according to the size of the lining (sideroom)



1 Dismounting of panels

To remove the panel from the guide profile, first remove the rubber stopper from the guide C profile. Then unscrew the multi-position arm from the panel and pull out the multi-position arm from the guiding C-profile. This is followed by the step-by-step dismounting of the hinges from the panels. First remove the vertical row of hinges on the side of the guide curve and slide the panel out of the C- profile. Repeat the process for the remaining panels.

2 Dismounting of guiding C-profiles and guiding curve

Stepwise remove the screws from the wall brackets, then loosen the C-profiles and unhook the entire guide rails upwards.



KRUŽÍK® /

Kroměříž, Veleslavínova 2357, [tel.] 573 336 233, [fax.] 573 343 582

Praha 10 Hostivař, Herbenova 38, [tel.] 267 710 901, [fax.] 267 710 696

г. Мукачево 89622, 000, "Кружик Украина", с. Ивановцы, ул. Мира, 3, [тел] +38-050-523-59-69

09032018

www.kruzik.cz | www.kruzik.com | www.kruzik.com.ua | www.kruzik.eu